



4 Generations of Experience & 100 Years of Excellence

25-40 50TH AVE LIC, NY 11101

P 718.433.2501 F 718.433.2709

info@bbsheetmetal.com www.bbsheetmetal.com

NOTES / MATERIAL:

DIVISION:
7 THERMAL & MOISTURE PROTECTION
SECTION:
07600 - FLASHING & SHEET METAL

***NOTE: CURRENT PART COMES IN
STANDARD 10' STRAIGHT SECTION**

***NOTE: CURRENT DIMENSIONS ARE
BASED ON THE SCALE ON PLANS,
ACTUAL DIMENSIONS WILL NEED TO
BE VERIFIED IN FIELD**

CONTRACTOR:

ARCHITECT/DESIGNER:

PROJECT TITLE/LOCATION:

SCALE: AS NOTED

DRAFTED BY: PC DATE: 09.16.2024

SALES REPRESENTATIVE DATE

- ☐ REQUEST FOR QUOTATION
☐ SUBMIT FOR QUOTATION
☐ SUBMIT FOR APPROVAL
☐ APPROVED FOR FABRICATION
☐ APPROVED WITH CHANGES
☐ DISAPPROVED, RESUBMIT
☐ FOR YOUR FILES

ONCE THE FABRICATION BEGINS, ITEMS CAN
NOT BE RETURNED. THE DETAILS FOR THIS
JOB WERE CHECKED AND APPROVED BY:

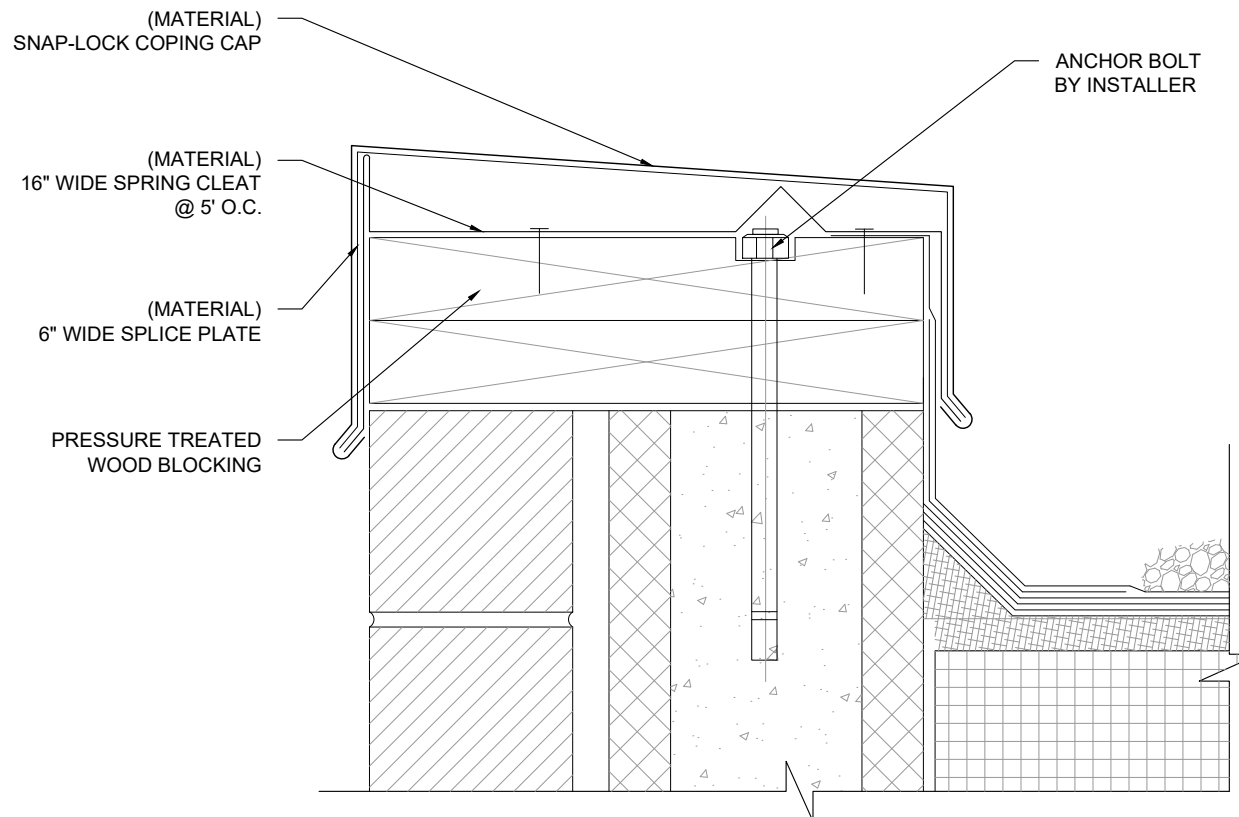
AUTHORIZED CUSTOMER SIGNATURE

TITLE DATE

PAGE 1

A/BB01

SNAP-LOCK COPING CAP



1 TYPICAL SECTION DETAIL AT COPING
BB01 SCALE: 3" = 1'-0"

NOTE: PLEASE CALL 718.433.2501 TO CERTIFY THAT MATERIAL ORDERED FROM THESE APPROVED PRODUCT SUBMITTALS WERE FABRICATED BY THE APPROVED MANUFACTURER, B&B SHEET METAL

NOTES / MATERIAL:

DIVISION:
7 THERMAL & MOISTURE PROTECTION
SECTION:
07600 - FLASHING & SHEET METAL

***NOTE: CURRENT PART COMES IN
STANDARD 10' STRAIGHT SECTION**
***NOTE: CURRENT DIMENSIONS ARE
BASED ON THE SCALE ON PLANS,
ACTUAL DIMENSIONS WILL NEED TO
BE VERIFIED IN FIELD**

CONTRACTOR:

ARCHITECT/DESIGNER:

PROJECT TITLE/ LOCATION:

SCALE: AS NOTED

DRAFTED BY: PC DATE: 09.16.2024

SALES REPRESENTATIVE DATE

- ☐ REQUEST FOR QUOTATION
☐ SUBMIT FOR QUOTATION
☐ SUBMIT FOR APPROVAL
☐ APPROVED FOR FABRICATION
☐ APPROVED WITH CHANGES
☐ DISAPPROVED, RESUBMIT
☐ FOR YOUR FILES

ONCE THE FABRICATION BEGINS, ITEMS CAN
NOT BE RETURNED. THE DETAILS FOR THIS
JOB WERE CHECKED AND APPROVED BY:

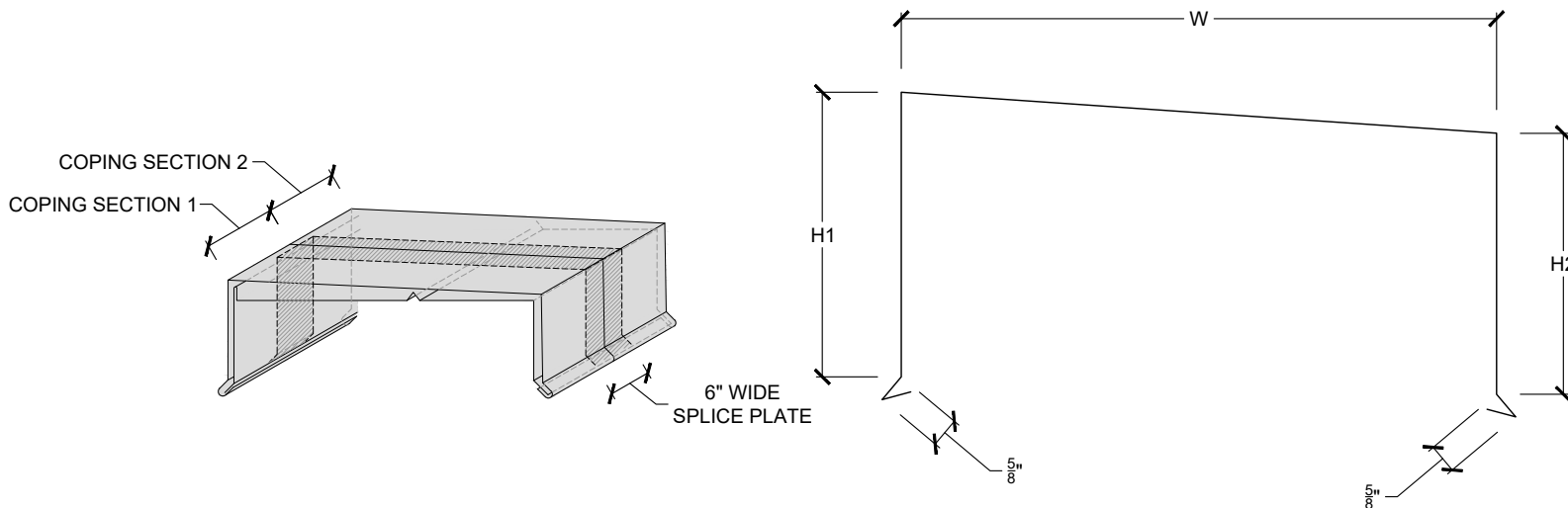
AUTHORIZED CUSTOMER SIGNATURE

TITLE DATE

PAGE 2

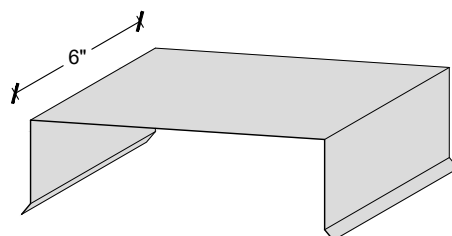
BB02

SNAP-LOCK COPING CAP

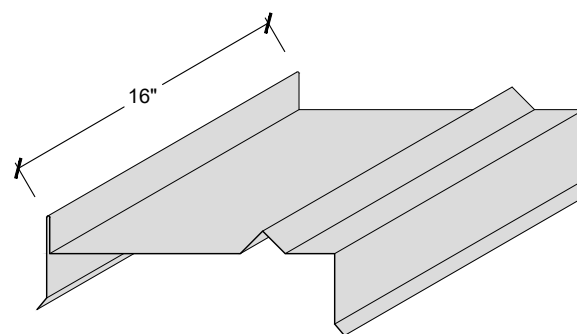


A (MATERIAL) - SNAP-LOCK COPING CAP CONNECTION (ISO)
SCALE: NTS

B (MATERIAL) - SNAP-ON COPING CAP
SCALE: NTS



C (MATERIAL) - 6" WIDE SPLICE PLATE (ISO)
SCALE: NTS



D (MATERIAL) - 16" WIDE SPLICE PLATE (ISO)
SCALE: NTS

NOTES / MATERIAL:

DIVISION:
7 THERMAL & MOISTURE PROTECTION
SECTION:
07600 - FLASHING & SHEET METAL

***NOTE: CURRENT PART COMES IN STANDARD 10' STRAIGHT SECTION**

***NOTE: CURRENT DIMENSIONS ARE BASED ON THE SCALE ON PLANS, ACTUAL DIMENSIONS WILL NEED TO BE VERIFIED IN FIELD**

CONTRACTOR:

ARCHITECT/DESIGNER:

PROJECT TITLE/LOCATION:

SCALE: AS NOTED

DRAFTED BY: PC DATE: 09.16.2024

SALES REPRESENTATIVE DATE

- ☐ REQUEST FOR QUOTATION
☐ SUBMIT FOR QUOTATION
☐ SUBMIT FOR APPROVAL
☐ APPROVED FOR FABRICATION
☐ APPROVED WITH CHANGES
☐ DISAPPROVED, RESUBMIT
☐ FOR YOUR FILES

ONCE THE FABRICATION BEGINS, ITEMS CAN NOT BE RETURNED. THE DETAILS FOR THIS JOB WERE CHECKED AND APPROVED BY:

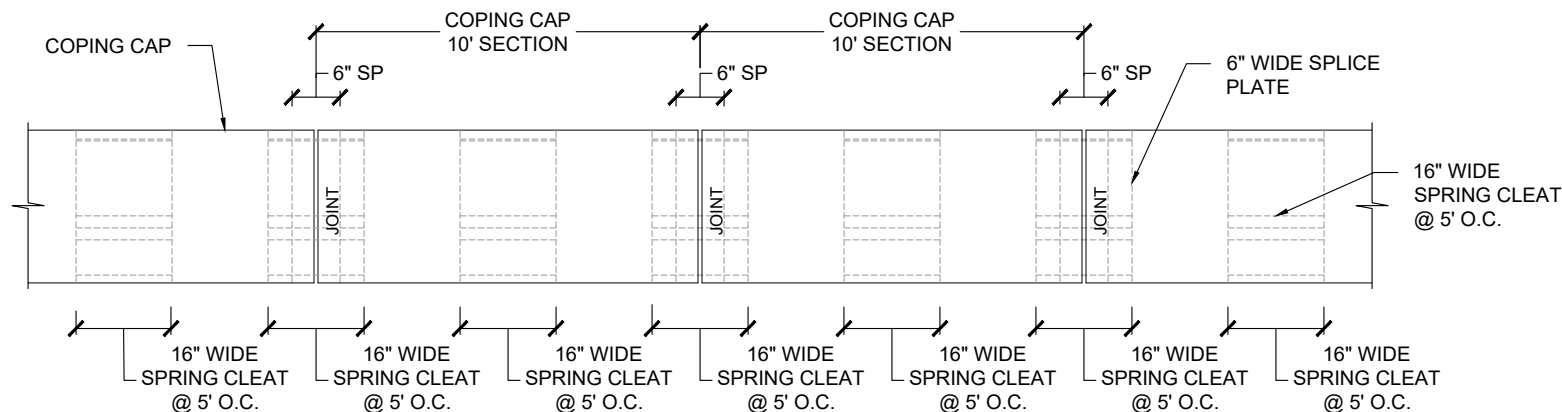
AUTHORIZED CUSTOMER SIGNATURE

TITLE DATE

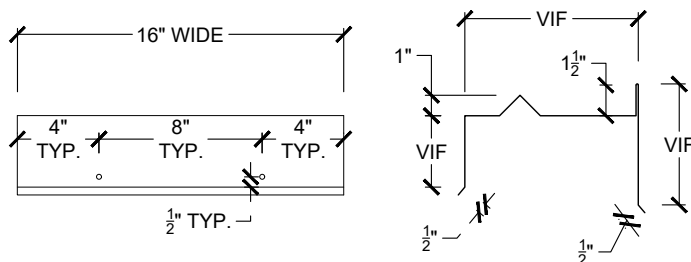
PAGE 3

BB03

COPING CAP DIAGRAM

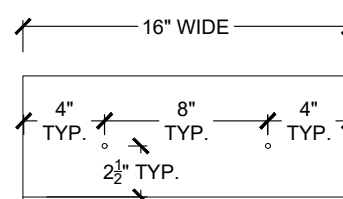


A SPRING CLEAT COPING SYSTEM - PLAN VIEW
SCALE: NTS

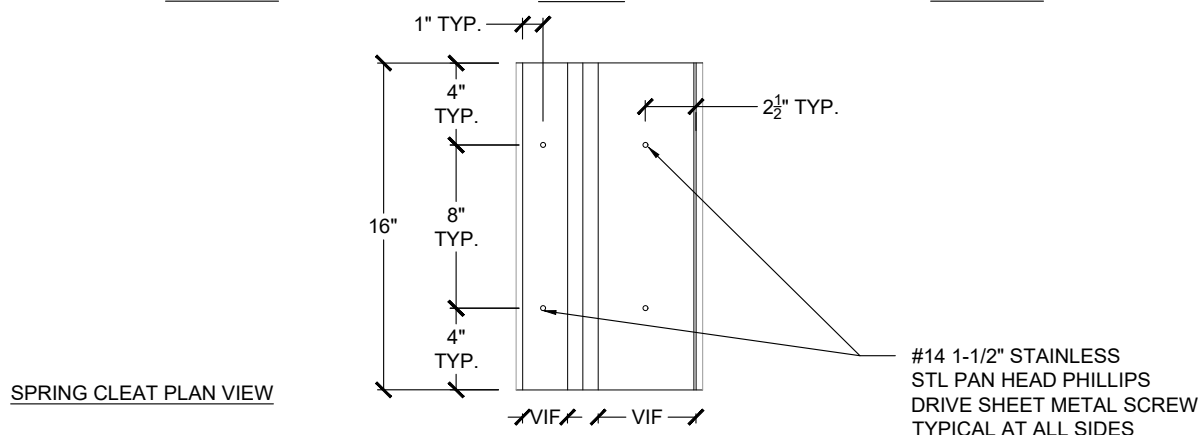


SPRING CLEAT I/S FACE
ELEVATION

SPRING CLEAT
PROFILE



SPRING CLEAT O/S FACE
ELEVATION



SPRING CLEAT PLAN VIEW

B (MATERIAL) - 16" WIDE SPRING CLEAT FASTENING PATTERN
SCALE: NTS

NOTE: PLEASE CALL 718.433.2501 TO CERTIFY THAT MATERIAL ORDERED FROM THESE APPROVED PRODUCT SUBMITTALS WERE FABRICATED BY THE APPROVED MANUFACTURER, B&B SHEET METAL