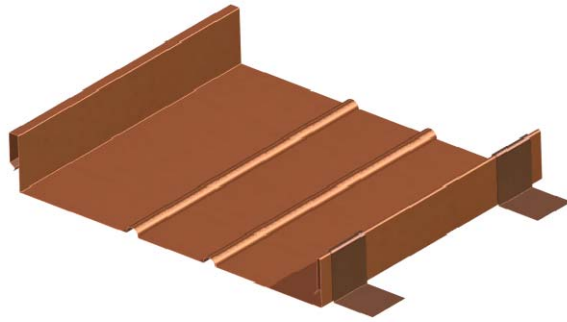
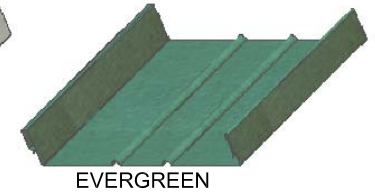


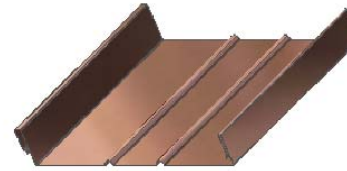
# S2000 INTEGRAL SNAP-LOCK METAL ROOF PANEL



FREEDOM  
GRAY



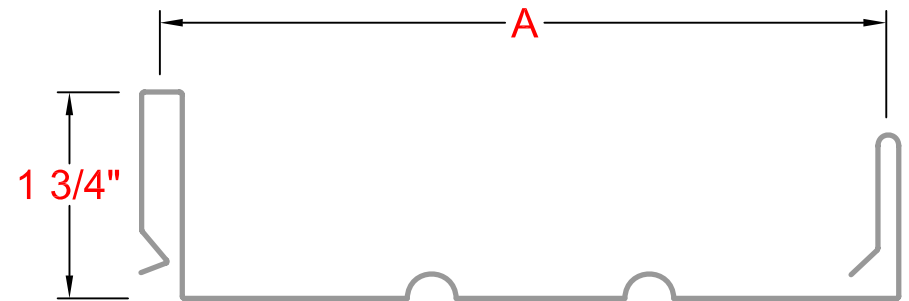
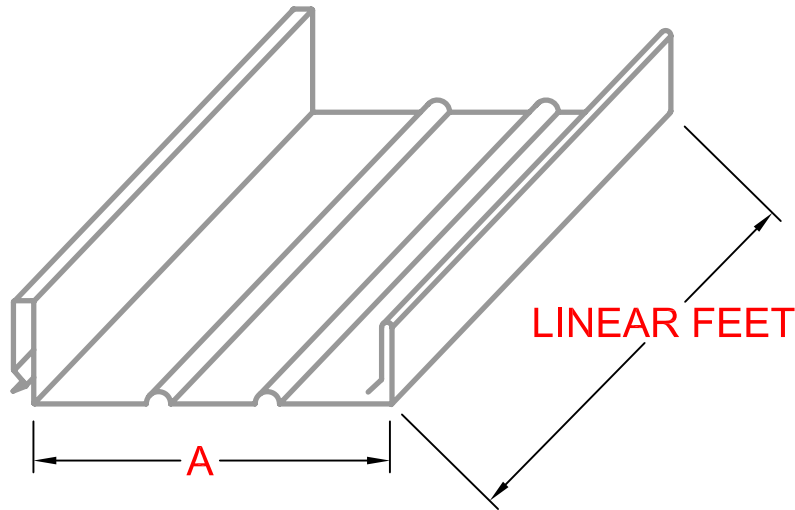
EVERGREEN



COPPER



LEAD COATED  
COPPER



25-40 50 TH AVE.  
LIC, NY 11101  
P 718 433 2501  
F 718 433 2709  
info@bbsheetmetal.com  
www.bbsheetmetal.com

COMPANY:		DATE:
INVOICE:	PO#:	DRAWING #: <b>MRP-11</b>
PROJECT:		PAGE(S): <b>1 OF 4</b>
INSTALLATION INSTRUCTION:		DRAWING BY: <b>NELSON SUT HO</b>
OTHER:		APPROVED BY: <b>BOBBY BASCHNAGEL</b>





4 Generations of Experience & 100 Years of Excellence

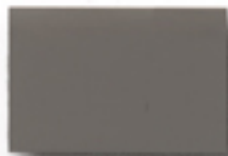
Kynar 500® or Hylar 5000®  
pre-finished galvanized steel  
and aluminum for roofing,  
Curtainwall and storefront  
applications.



STONE WHITE



BONE WHITE



SLATE GRAY



MUSKET GRAY



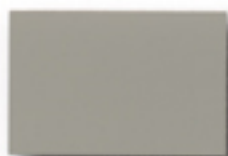
CHARCOAL



ALMOND



SANDSTONE



GRANITE



MEDIUM BRONZE



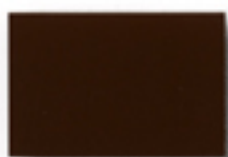
MATTE BLACK\*



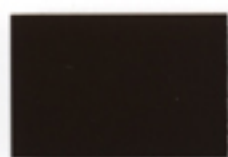
FOREST GREEN



SIERRA TAN



MANSARD BROWN



DARK BRONZE\*



INTERSTATE BLUE



HARTFORD GREEN



TEAL



BURGUNDY



TERRA COTTA



MILITARY BLUE



ARCADIA GREEN



HEMLOCK GREEN



CARDINAL RED



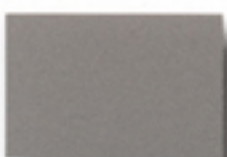
COLONIAL RED



BERKSHIRE BLUE



PATINA GREEN



\*ZINC



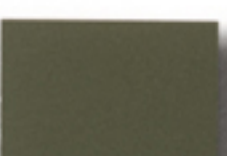
\*SILVER



\*COPPER PENNY



AWARD BLUE



\*AGED COPPER



\*CHAMPAGNE



\*WEATHERED ZINC

\* B&B SHEET METAL® Metallic finishes are available from stock at a moderate extra cost. B&B SHEET METAL Copper Penny is a Non-Weathering finish.  
\* Chips represent colors on 24 ga. galvanized steel. Consult actual samples for these colors on aluminum sheet.

● Denotes available from stock. ★ Indicates low gloss/low sheen formulation.

PAC-CLAD Standard	Steel		Aluminum				
	24 ga.	22 ga.	.032	.040	.050	.063	.080
Almond	●		●	●	●		
Arcadia Green	●		●				
Award Blue	●		●		●		
Berkshire Blue	●★						
Bone White	●	●	●	●	●	●	●
Burgundy	●		●		●		
Cardinal Red	●		●		●		
Charcoal	●						
Colonial Red	●		●		●		
Dark Bronze	●	●	●	●	●	●	
Forest Green	●	●	●	●	●		
Granite	●★		●★		●★		
Hartford Green	●		●	●	●		
Hemlock Green	●	●	●		●		
Interstate Blue	●		●		●		
Mansard Brown	●	●	●	●	●		
Matte Black	●		●	●	●	●	
Medium Bronze	●	●	●	●	●	●	
Military Blue	●		●				
Musket Gray	●	●	●		●		
Patina Green	●			●			
Sandstone	●	●	●	●	●	●	
Sierra Tan	●		●	●	●		
Slate Gray	●	●	●		●		
Stone White	●	●	●	●	●	●	
Teal	●	●	●				
Terra Cotta	●		●		●		
<b>PAC-CLAD Metallic</b>							
Aged Copper	●		●		●		
Champagne	●		●		●		
Copper Penny	●		●		●		
Silver	●		●	●	●		
Weathered Zinc	●		●		●		
Zinc	●		●		●		

PAC-CLAD® Metallic finishes are available from stock at a moderate extra cost. PAC-CLAD® Copper Penny is a Non-Weathering finish.

#### Installation

PAC-CLAD® can be cut, formed, nailed, screwed, or riveted using hand or power tools. Fabricate and install in accordance with drawings and normal sheet metal practices using hand or power tools. Keep cutting edges sharp, clean, and properly aligned. Exercise care during fabrication and installation to avoid damage.

#### Maintenance

Maintenance is not required. This finish is a member of the Teflon® family, and is self-cleaning. If cleaning is desired, it can be washed with a mild soap and water followed by a clean-water rinse.

#### Samples

These color reproductions are as accurate as modern printing technology will permit. Free material samples are available on request.

#### Textures

PAC-CLAD® is available with a smooth texture or a standard E-5 stucco embossed pattern, available at extra cost.

#### ★ Low Gloss/Low Sheen

This finish is a full Kynar 500®/Hylar 5000® finish, but is formulated in a low gloss/low sheen in order to minimize the appearance of oil-canning.

#### Technical Data for Kynar 500®/Hylar 5000® Coating

•**Life Expectancy**—20 years exposure - Chalk: rating of 8 or better. Color:  $\leq 5\Delta E$  (Hunter Units) change.

•**Accelerated Weathering**—(ASTM G-23 Type EH) 5,000 hours - Chalk: rating of 8 or better. Color:  $\leq 5\Delta E$  (Hunter Units) color change.

•**Humidity Resistance**—(ASTM 2247) 1,000 hours - No change in pencil hardness.

•**Salt Spray Resistance**—(ASTM B 117) - 2,000 hours for Aluminum, creepage at scribe  $\leq 1/32"$ , no blisters. 1,000 hours for hot dipped Galvanized, creepage at scribe  $\leq 1/8"$ , few #8 blisters.

•**Chemical/Acid Pollution Resistance**—(ASTM D 1808) - Pass.

•**Solvent Resistance**—(NCCA procedure 11-18, no comparable ASTM test) - Pass.

•**Formability**—(ASTM D 3281 and ASTM D 1737) - Can be formed without film fracture using normal metal shop practices to a 1 to 2-T bend radius

•**Hardness**—(ASTM D 3363) -  $\geq F$  pencil hardness.

•**Gloss**— $30 \pm 5$  at 60° (low gloss/sheen available).

•**Abrasion Resistance**—(ASTM D 968) - Coefficient of  $65 \pm 10$ .

•**Adhesion**—(ASTM D 3359 and NCCA procedure No. 11-5) - Pass.

•**Impact Resistance**—(ASTM D 2794 and NCCA Technical Bulletin No. 11-6) - 70 inch/lb., no tape pick-off.



4 Generations of Experience & 100 Years of Excellence

25-40 50th Avenue  
Long Island, NY 11101

718-433-2501  
Fax: 718-433-2709

PAC-CLAD® is a registered trademark of Petersen Aluminum Corporation, Kynar 500® is a registered trademark of Eli Atochem North America, Inc. Hylar 5000® is a registered trademark of Ausimont USA.

12/2004