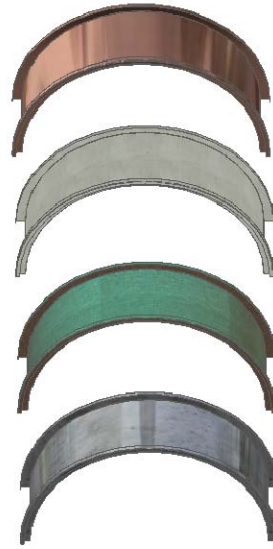


1" DOUBLE LOCK CURVED STANDING SEAM METAL ROOF PANEL

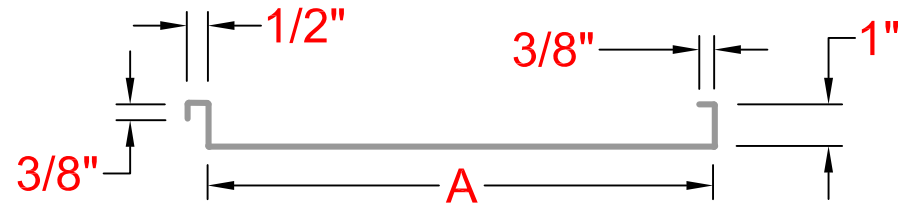
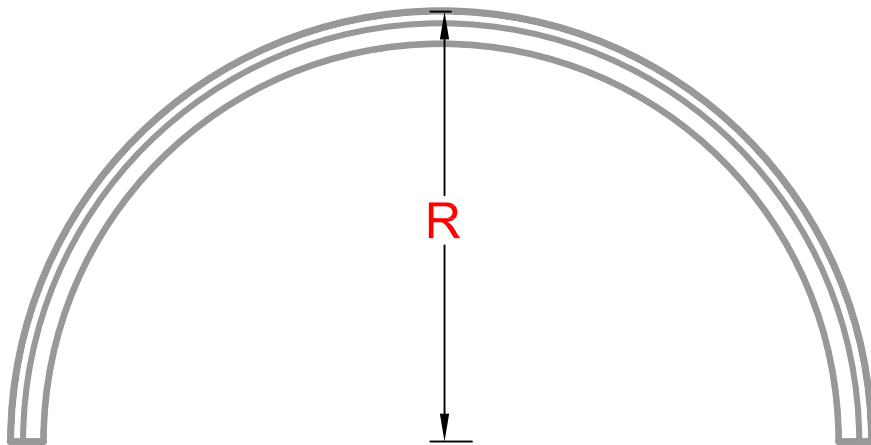


COPPER

FREEDOM GRAY

EVERGREEN

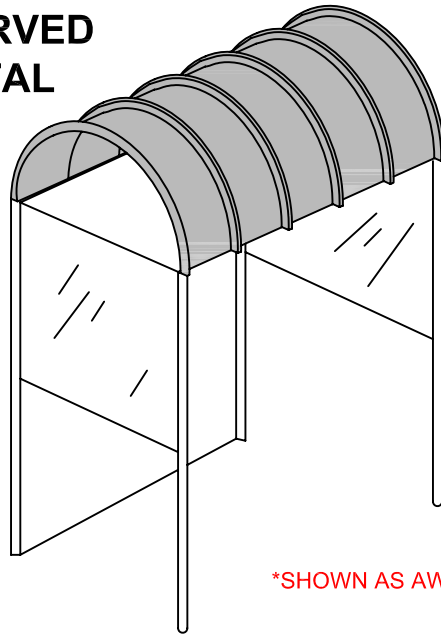
LEAD COATED COPPER



25-40 50 TH AVE.
LIC, NY 11101
P 718 433 2501
F 718 433 2709
info@bbsheetmetal.com
www.bbsheetmetal.com

COMPANY:	DATE:
INVOICE:	DRAWING #:
PROJECT:	MRP-01
INSTALLATION INSTRUCTION:	PAGE(S):
OTHER:	1 OF 4
	DRAWING BY:
	NELSON SUT HO
	APPROVED BY:
	BOBBY BASCHNAGEL

1" DOUBLE LOCK CURVED STANDING SEAM METAL ROOF PANEL



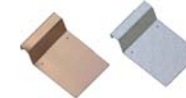
*SHOWN AS AWNING COVER

MATERIAL:

- COPPER 16 20
- FREEDOM GRAY 16 20
- LEAD COATED COPPER 16 20
- EVERGREEN COPPER 16 20
- KYNAR 500 ALUMINUM .032 .040
- COLOR]
- *REFER TO KYNAR 500 COLOR CHART
- KYNAR 500 GALVANIZED STEEL 22 24
- COLOR]
- *REFER TO KYNAR 500 COLOR CHART

CLEAT:

- NO CLEAT
- CLEAT QTY.]



OFFICE USE ONLY

- COPPER CLEAT GALVANIZED STEEL CLEAT

DIMENSION:

-] A
-] R (RADIUS)

QUANTITY]

INFORMATION: THIS TYPE OF METAL ROOF PANEL IS RUN THROUGH A RADIUS MACHINE AND IS CURVED TO YOUR DESIRED RADIUS. WHEN CHOOSING A RADIUS ROOF, DOUBLE LOCK SEAMS ARE THE MOST RELIABLE AND WATERTIGHT IN ALL CONDITIONS.

OTHER: CLEATS ARE DETERMINED BASED ON CHOSEN MATERIALS; COPPER OR GALVANIZED STEEL.

ONCE THE FABRICATION BEGINS, ITEMS CAN NOT BE RETURNED. THE DETAILS FOR THIS JOB WERE CHECKED AND APPROVED BY:

B & B SALES REP

NAME: _____ SIGN: X _____ DATE: __ / __ / ____



25-40 50 TH AVE.
LIC, NY 11101
P 718 433 2501
F 718 433 2709
info@bbsheetmetal.com
www.bbsheetmetal.com

COMPANY:	DATE:	
INVOICE:	PO#:	DRAWING #: MRP-01
PROJECT:	INSTALLATION INSTRUCTION:	PAGE(S): 2 OF 4
OTHER:		DRAWING BY: NELSON SUT HO
		APPROVED BY: BOBBY BASCHNAGEL



4 Generations of Experience & 100 Years of Excellence

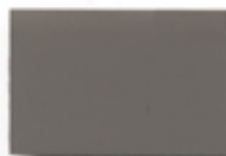
Kynar 500® or Hylar 5000®
pre-finished galvanized steel
and aluminum for roofing,
Curtainwall and storefront
applications.



STONE WHITE



BONE WHITE



SLATE GRAY



MUSKET GRAY



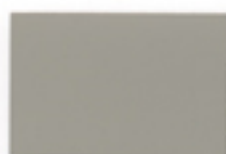
CHARCOAL



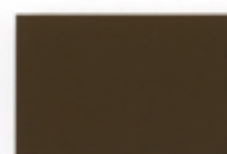
ALMOND



SANDSTONE



GRANITE



MEDIUM BRONZE



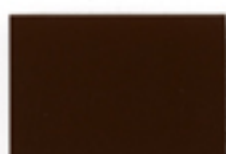
MATTE BLACK*



FOREST GREEN



SIERRA TAN



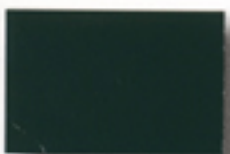
MANSARD BROWN



DARK BRONZE*



INTERSTATE BLUE



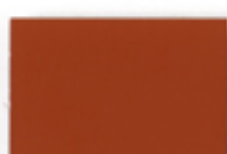
HARTFORD GREEN



TEAL



BURGUNDY



TERRA COTTA



MILITARY BLUE



ARCADIA GREEN



HEMLOCK GREEN



CARDINAL RED



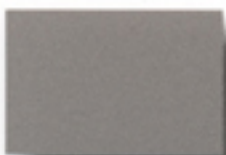
COLONIAL RED



BERKSHIRE BLUE



PATINA GREEN



*ZINC



*SILVER



*COPPER PENNY



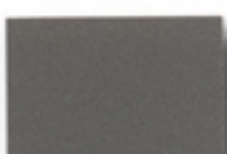
AWARD BLUE



*AGED COPPER



*CHAMPAGNE



*WEATHERED ZINC

* B&B SHEET METAL® Metallic finishes are available from stock at a moderate extra cost. B&B SHEET METAL Copper Penny is a Non-Weathering finish.
* Chips represent colors on 24 ga. galvanized steel. Consult actual samples for these colors on aluminum sheet.

● Denotes available from stock. ★ Indicates low gloss/low sheen formulation.

PAC-CLAD Standard	Steel		Aluminum				
	24 ga.	22 ga.	.032	.040	.050	.063	.080
Almond	●		●	●	●		
Arcadia Green	●		●				
Award Blue	●		●		●		
Berkshire Blue	●★						
Bone White	●	●	●	●	●	●	●
Burgundy	●		●		●		
Cardinal Red	●		●		●		
Charcoal	●						
Colonial Red	●		●		●		
Dark Bronze	●	●	●	●	●	●	
Forest Green	●	●	●	●	●		
Granite	●★		●★		●★		
Hartford Green	●		●	●	●		
Hemlock Green	●	●	●		●		
Interstate Blue	●		●		●		
Mansard Brown	●	●	●	●	●		
Matte Black	●		●	●	●	●	
Medium Bronze	●	●	●	●	●	●	
Military Blue	●		●				
Musket Gray	●	●	●		●		
Patina Green	●			●			
Sandstone	●	●	●	●	●	●	
Sierra Tan	●		●	●	●		
Slate Gray	●	●	●		●		
Stone White	●	●	●	●	●	●	
Teal	●	●	●				
Terra Cotta	●		●		●		
PAC-CLAD Metallic							
Aged Copper	●		●		●		
Champagne	●		●		●		
Copper Penny	●		●		●		
Silver	●		●	●	●		
Weathered Zinc	●		●		●		
Zinc	●		●		●		

PAC-CLAD® Metallic finishes are available from stock at a moderate extra cost. PAC-CLAD® Copper Penny is a Non-Weathering finish.

Installation

PAC-CLAD® can be cut, formed, nailed, screwed, or riveted using hand or power tools. Fabricate and install in accordance with drawings and normal sheet metal practices using hand or power tools. Keep cutting edges sharp, clean, and properly aligned. Exercise care during fabrication and installation to avoid damage.

Maintenance

Maintenance is not required. This finish is a member of the Teflon® family, and is self-cleaning. If cleaning is desired, it can be washed with a mild soap and water followed by a clean-water rinse.

Samples

These color reproductions are as accurate as modern printing technology will permit. Free material samples are available on request.

Textures

PAC-CLAD® is available with a smooth texture or a standard E-5 stucco embossed pattern, available at extra cost.

★ Low Gloss/Low Sheen

This finish is a full Kynar 500®/Hylar 5000® finish, but is formulated in a low gloss/low sheen in order to minimize the appearance of oil-canning.

Technical Data for Kynar 500®/Hylar 5000® Coating

•**Life Expectancy**—20 years exposure - Chalk: rating of 8 or better. Color: $\leq 5\Delta E$ (Hunter Units) change.

•**Accelerated Weathering**—(ASTM G-23 Type EH) 5,000 hours - Chalk: rating of 8 or better. Color: $\leq 5\Delta E$ (Hunter Units) color change.

•**Humidity Resistance**—(ASTM 2247) 1,000 hours - No change in pencil hardness.

•**Salt Spray Resistance**—(ASTM B 117) - 2,000 hours for Aluminum, creepage at scribe $\leq 1/32"$, no blisters. 1,000 hours for hot dipped Galvanized, creepage at scribe $\leq 1/8"$, few #8 blisters.

•**Chemical/Acid Pollution Resistance**—(ASTM D 1808) - Pass.

•**Solvent Resistance**—(NCCA procedure 11-18, no comparable ASTM test) - Pass.

•**Formability**—(ASTM D 3281 and ASTM D 1737) - Can be formed without film fracture using normal metal shop practices to a 1 to 2-T bend radius

•**Hardness**—(ASTM D 3363) - $\geq F$ pencil hardness.

•**Gloss**— 30 ± 5 at 60° (low gloss/sheen available).

•**Abrasion Resistance**—(ASTM D 968) - Coefficient of 65 ± 10 .

•**Adhesion**—(ASTM D 3359 and NCCA procedure No. 11-5) - Pass.

•**Impact Resistance**—(ASTM D 2794 and NCCA Technical Bulletin No. 11-6) - 70 inch/lb., no tape pick-off.



4 Generations of Experience & 100 Years of Excellence

25-40 50th Avenue
Long Island, NY 11101

718-433-2501
Fax: 718-433-2709

PAC-CLAD® is a registered trademark of Petersen Aluminum Corporation, Kynar 500® is a registered trademark of Eli Atochem North America, Inc. Hylar 5000® is a registered trademark of Ausimont USA.

12/2004