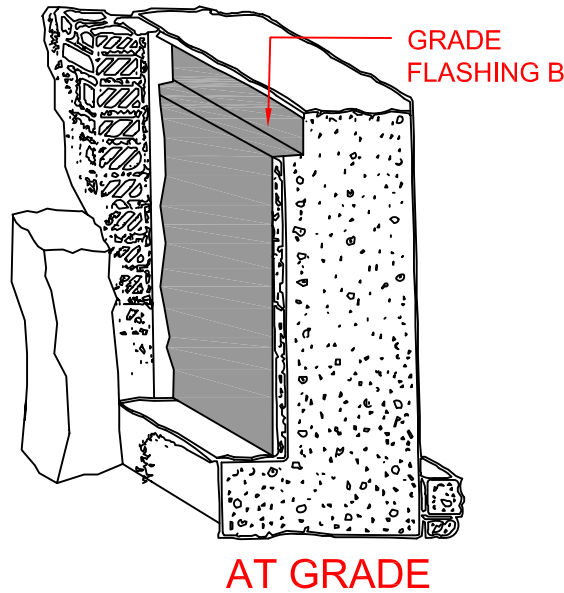


# THROUGH-WALL GRADE METAL FLASHING B



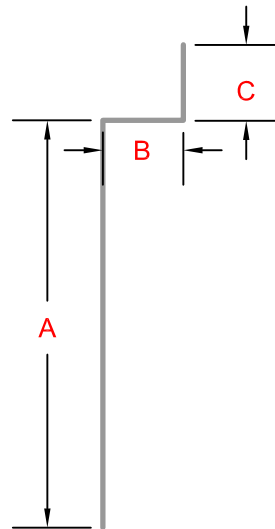
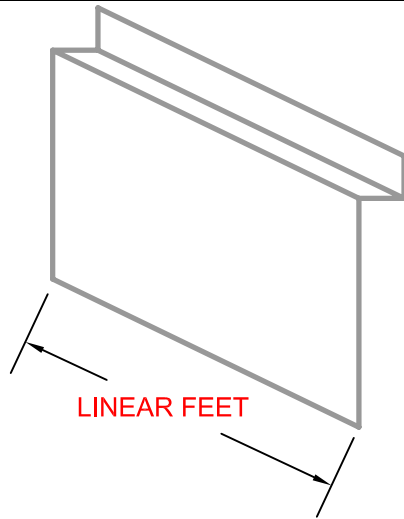
## MATERIAL:

- COPPER  .16  .20
- STAINLESS STEEL  .16  .18  .20
- LEAD COATED COPPER  .22  .24  .26
- MILL FINISH ALUMINUM  .16  .20
- .019  .025  .032
- .040  .050  .063
- .080

## DIMENSION:

- ]A
- ]B
- ]C
- ]LINEAR FEET

QUANTITY[       ]



**ONCE THE FABRICATION BEGINS, ITEMS CAN NOT BE RETURNED. THE DETAILS FOR THIS JOB WERE CHECKED AND APPROVED BY:** \_\_\_\_\_

**B & B SALES REP**

**NAME:** \_\_\_\_\_ **SIGN:** X \_\_\_\_\_

**DATE:** \_\_/\_\_/\_\_



4 Generations of Experience & 100 Years of Excellence

25-40 50 TH AVE.  
 LIC, NY 11101  
 P 718 433 2501  
 F 718 433 2709  
 info@bbsheetmetal.com  
 www.bbsheetmetal.com

COMPANY:	DATE:	
INVOICE:	PO#:	DRAWING #: <b>FLASH-TWG02</b>
PROJECT:	INSTALLATION INSTRUCTION:	PAGE(S): <b>1 OF 1</b>
OTHER:	DRAWING BY: <b>NELSON SUT HO</b>	APPROVED BY: <b>BOBBY BASCHNAGEL</b>